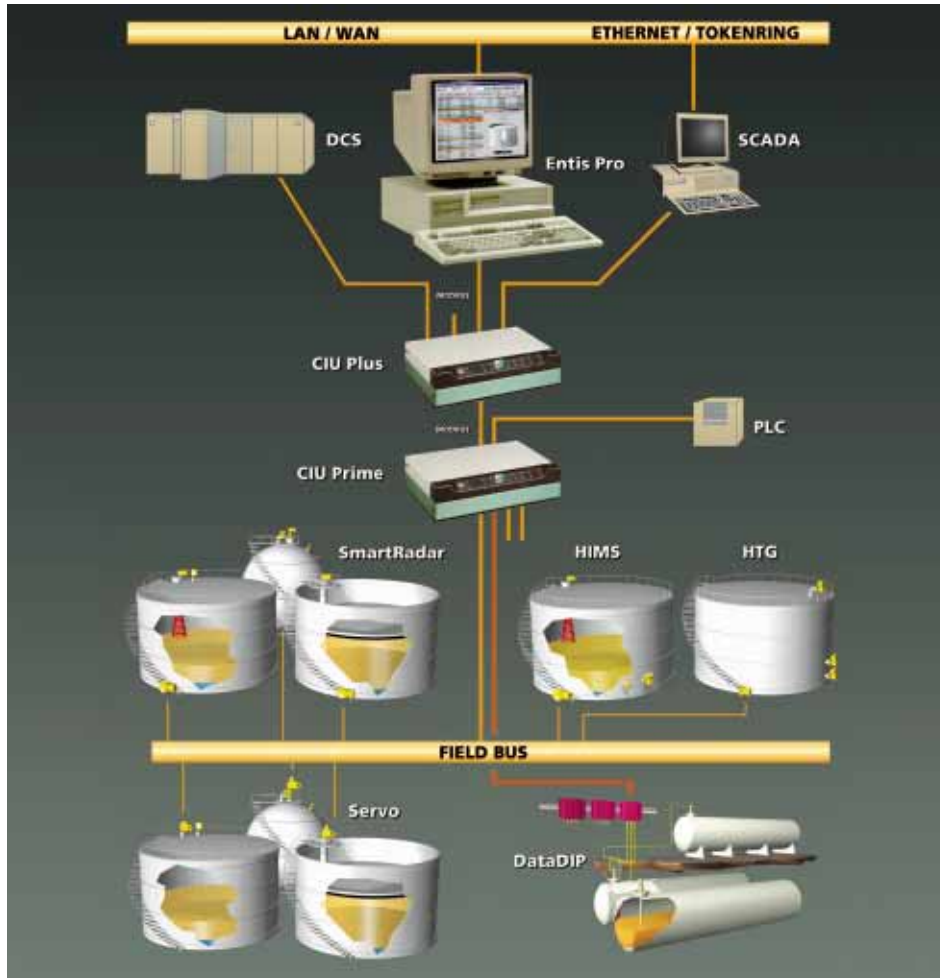




## Entis Pro the New CYBER Approach to Manage your Liquid Inventory



## Real Time Inventory

Entis Pro is a native multi-tasking Windows NT application. Data is retrieved via dedicated Communication Interface Units (CIU's) and processed through to the open Entis Pro inventory database. A myriad of different screens are available for inventory management, these include bar graphs, tabular details, iconized tanks and a whole range of optional modules such as trending, report printing and a 'what if...' tank calculator.

*With just one click of the mouse you can receive all the information, when you need it!*

## Numerical & Graphical Displays

All the data shown in the numerical displays is of a high resolution and accuracy. The graphical displays provide a quick overview of tank status. Both numerical and graphical displays are available. The numerical displays can even be customized to suit your own particular needs. These displays can be either tank or group related. Several graphical interfaces are also available and the tank images can be customized per tank if required.

*With Entis Pro you don't have to compromise!*

## Introduction

With the Entis Pro system, tank inventory management will be drastically improved at your site. Entis Pro will provide all the measured and calculated data needed for a Tank Farm, regardless of size.

*This is the first dedicated Tank Inventory System for the world of Windows!*

## Open Architecture

Entis Pro is a unique Tank Inventory Management System which has been developed for Windows NT. Interfaces, at different system layers and provides communication with almost any third party package.

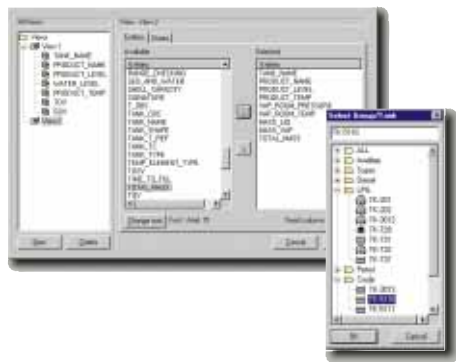
The open architecture of Entis Pro combines standard connectivity tools such as ODBC and OLE.

*Integration with SCADA is now extremely simple and reliable thereby offering you a wealth of control possibilities!*



## Intuitive operation

With Entis Pro there is no need to take time consuming courses or to read through piles of manuals. Entis Pro is mouse-driven and has a logical, easy to remember user interface. A change of color in the tank display immediately informs the operator whether the tank is being filled or emptied. Whether you are just a novice or an expert, anyone can operate the system.



*An easy system, is a safe system, from day one!*

## High Performance Reliable Architecture

Sophisticated scanning and calculating CIU's provide you with real-time inventory data. Inherent network segregation risks, common in client-server applications, are eliminated by high performance data replication throughout the network.

*In other words 'architecture which is proven and highly flexible, a necessity in today's world of professional PLC control'!*

## Networking

The excellent network facilities of Windows NT allow you to integrate Entis Pro into your plant's network. Local and wide-area networking are both possible via Ethernet or Tokenring. The use of a standard TCP/IP

makes hardware selection and installation easy and affordable. Even wireless and fiber optic communication can be seamlessly integrated.

## A Reliable Alarm System

In addition to the alarm contacts in the field instruments, Entis Pro provides you with an array of programmable alarm set points. Privileged users can create their own alarms for all measured or calculated data. Alarms pop up when they occur! Alarm avalanches, where just one failure leads to an inundation of vague messages, are prevented. During inactive periods, tanks can be put into leak detection mode. This leak alarm uses the temperature corrected volume to make sure that temperature variations do not mislead the system. Alarms and acknowledgments, together with all tank information, are recorded and stored for future review and traceability.



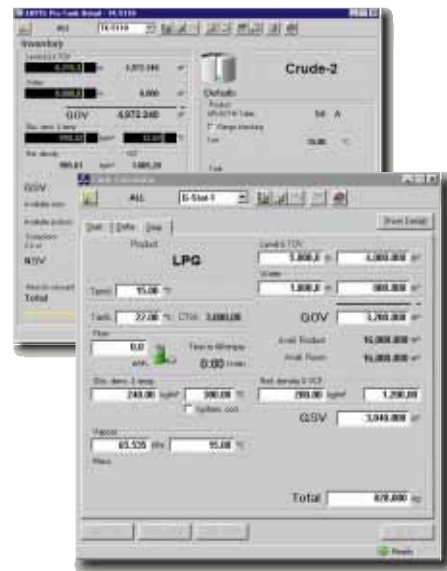
## Hot Standby & Redundancy Support

The Entis Pro system can be enhanced for use in critical applications with hot standby and redundancy support. Redundancy support can even cover the unlikely event of a network failure, providing you with sustained and uninterrupted data to your management system.

## Compliant Inventory Calculations

Entis Pro can provide you with accurate and reliable data. All the inventory calculations are fully API and ASTM compatible. The implemented calculation procedures have been verified by Weight & Measures authorities as being correct and provide accurate data.

*Entis Pro is the first Windows based Tank Inventory System to have been approved for custody transfer!*



## 50 Years Tank Gauging Experience

Entis Pro has been developed by Enraf, a company which has 50 years experience in reliable and accurate tank gauging systems. Entis Pro is compatible with all our existing instruments. This means that you can simply migrate and upgrade the system to your requirements.

*We invite you to come and see the user-friendly Entis Pro in action, experience the power!*



# Enraf

**Enraf B.V.**  
Röntgenweg 1, 2624 BD Delft  
P.O. Box 812, 2600 AV Delft  
The Netherlands  
Tel.: +31 (0)15 269 86 00  
Fax: +31 (0)15 261 95 74  
Email: info@enraf.nl  
http://www.enraf.com

We at Enraf are committed to excellence.

**China: Enraf B.V. (Shanghai Rep. Office)**  
18-01 Suncome Liauw's Plaza  
738 Shangcheng Road, Pudong, Shanghai 200120  
Tel.: +86 21 58311611, Fax: +86 21 58313011

**France: ENRAF S.a.r.l.**  
ZAC les Beaudottes, 15 rue Paul Langevin  
93270 SEVRAN  
Tel.: +33 (0)1 49 36 20 80, Fax: +33 (0)1 43 85 26 48

**Germany: Enraf GmbH**  
Obere Dammstrasse 10, 42653 Solingen  
Postfach 101023, 42648 Solingen  
Tel.: +49 (0)212 58 750, Fax: +49 (0)212 58 7549

**Singapore: Enraf B.V. (Singapore Rep. Office)**  
Lam Soon Industrial Building  
63 Hillview Ave, # 05-03, Singapore 669569  
Tel.: +65 76 94 857, Fax: +65 76 94 348

**United Kingdom: Enraf Ltd.**  
Unit 11, Sandridge Park, Porters Wood  
St. Albans, Herts AL3 6PH  
Tel.: +44 (0)1 727 843 376, Fax: +44 (0)1 727 842 185

**USA: ENRAF Inc.**  
500 Century Plaza Drive, Suite 120  
Houston, Texas 77073  
Tel.: +1 281 443 4291, Fax: +1 281 443 6776

Information in this publication is subject to change without notice.  
® Enraf is a registered trademark © Enraf B.V. The Netherlands

