

# Corner Tap Orifice Flange Unions Brochure

---

[Overivew](#)

[Ordering Information](#)

[Dimensions](#)

## Product Overview

### CORNER TAP ORIFICE FLANGES PRODUCT BULLETIN #101

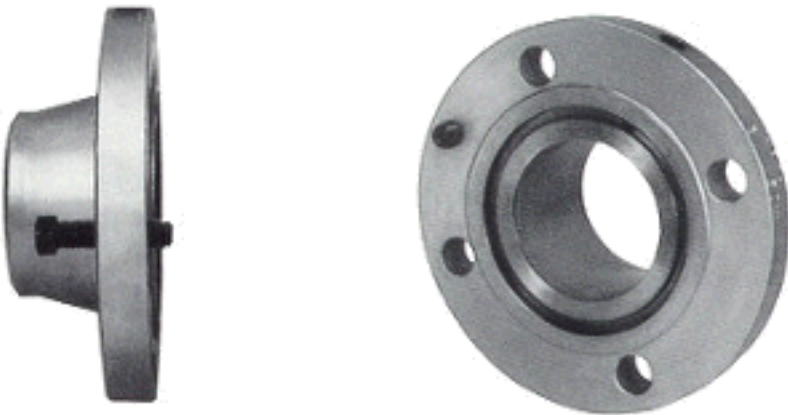


Catalog Number CT 15 RW

An economical line of raised, weldneck corner tap orifice flanges is available from Daniel Industries, Inc. These flanges are manufactured or forged carbon steel, A.S.T.M. A-105. They provide accurate, dependable measurement up to Class 150 A.N.S.I. pressure rating. Corner tap orifice flanges are used to measure both fluids and gases in refrigeration systems, air conditioning installations, plumbing systems, swimming pools, textile mills, food processing plants, and other places where economical accurate measurement is desired.

Each corner tap orifice flange union is shipped complete with two gaskets, two jackscrews, studs and hex nuts. Orifice plate not included. (See document entitled "[Ordering Information.](#)")

Low first cost, long service life and dependable accuracy make these corner tap orifice flanges ideal for many industrial and commercial applications. They can be used with any make differential recorder or indicator.



Catalog Number CT 15 RW



is a Registered Trademark, Copyright 1999

# Ordering Information-Corner Tap Orifice Flange Unions

## WHEN ORDERING PLEASE SPECIFY:

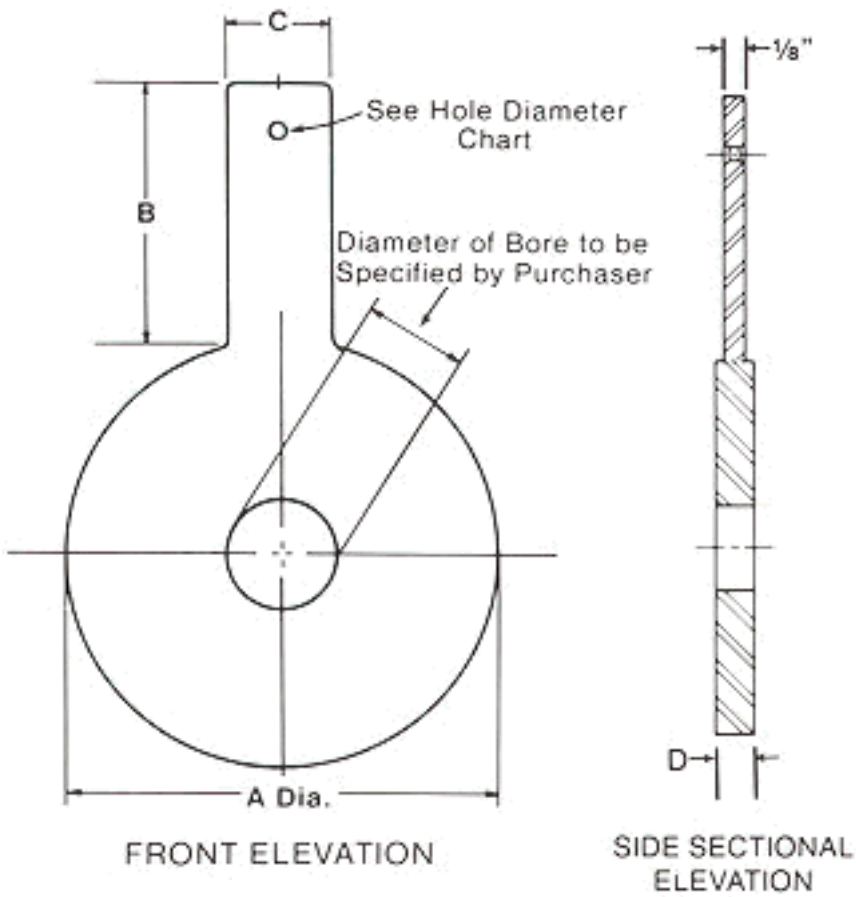
- Catalog Number
- Size
- Type of Service
- Operating Temperature

Orifice Plate not included--  
Order separately from chart shown below.

PLATE SIZE	HOLE DIAMETER
1/2" thru 2"	1/4"
2 1/2" thru 12"	3/8"

## ORIFICE FLANGE PLATES CATALOG NO. 520

Daniel Orifice Flange Plates are expertly machined from the finest materials by skilled personnel who understand the end use of their product. All DANIEL orifice plates must meet rigid quality-control standards.

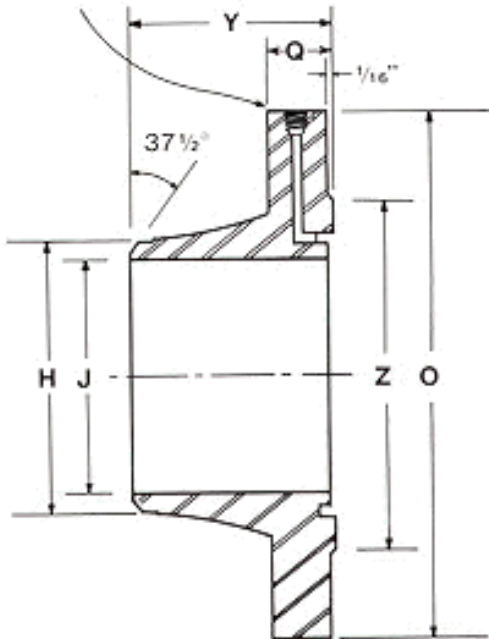


**PLATE DIMENSIONS**

LINE SIZE	DIAMETER A	HANDLE LENGTH B	HANDLE WIDTH C	PLATE THICKNESS D	DIAMETER OF BORE
1"	2 5/8"	4"	1"	1/8"	To be Specified by Customer
1 1/2"	3 3/8"	4"	1"	1/8"	
2"	4 1/8"	4"	1"	1/8"	
2 1/2"	4 7/8"	4"	1 1/4"	1/8"	
3"	5 3/8"	4"	1 1/4"	1/8"	
4"	6 7/8"	4"	1 1/4"	1/8"	
6"	8 3/4"	5"	1 1/2"	1/8"	
8"	11"	5"	1 1/2"	1/8"	
10"	13 1/8"	6"	1 1/2"	1/4"	
12"	16 1/8"	6"	1 1/2"	1/4"	

## Dimensional Information

Pressure Taps (both flanges)  
 1/8" N.P.T. (1" - 1 1/2")  
 1/4" N.P.T. (2" - 6"), 3/8" N.P.T. (8" - 12")



NOMINAL PIPE SIZE	RATING (A.N.S.I.) (285 PSI)	OUTSIDE DIAMETER	FLANGE THICKNESS (INCLUDES 1/16" RAISED FACE)	DIAMETER OF HUB	LENGTH THROUGH HUB	DIAMETER OF RAISED FACE	BORE
		O	Q	H	Y	Z	J
1"	150	4 1/4"	9/16"	1.32"	2 3/16"	(Flat Face)	1.049"
1 1/2"	150	5"	11/16"	1.90"	2 7/16"	2 7/8"	1.610"
2"	150	6"	3/4"	2.38"	2 1/2"	3 5/8"	2.067"
2 1/2"	150	7"	7/8"	2.88"	2 3/4"	4 1/8"	2.469"
3"	150	7 1/2"	15/16"	3.50"	2 3/4"	5"	3.068"
4"	150	9"	15/16"	4.50"	3"	6 3/16"	4.026"
6"	150	11"	1"	6.63"	3 1/2"	8 1/2"	6.065"
8"*	150	13 1/2"	1 1/8"	8.63"	4"	10 5/8"	8.071"
10"*	150	16"	1 3/16"	10.75"	4"	12 3/4"	10.136"
12"*	150	19"	1 1/4"	12.75"	4 1/2"	15"	12.090"

NOMINAL PIPE SIZE	NO. OF BOLT HOLES	DIAMETER OF BOLTS	DIAMETER OF HOLES	LENGTH OF STUDS	DIAMETER OF BOLT CIRCLE	JACKSCREW SIZE & LENGTH	APPROX. WT. OF UNION (LBS.)
1"	4	1/2"	5/8"	2 3/4"	3 1/8"	1/2" x 2"	4
1 1/2"	4	1/2"	5/8"	3"	3 7/8"	1/2" x 2"	10
2"	4	5/8"	3/4"	3 1/4"	4 3/4"	1/2" x 2"	12
2 1/2"	4	5/8"	3/4"	3 1/2"	5 1/2"	1/2" x 2"	20
3"	4	5/8"	3/4"	3 3/4"	6"	1/2" x 2"	23
4"	8	5/8"	3/4"	3 3/4"	7 1/2"	1/2" x 2"	30
6"	8	3/4"	7/8"	4 1/4"	9 1/2"	5/8" x 3"	48

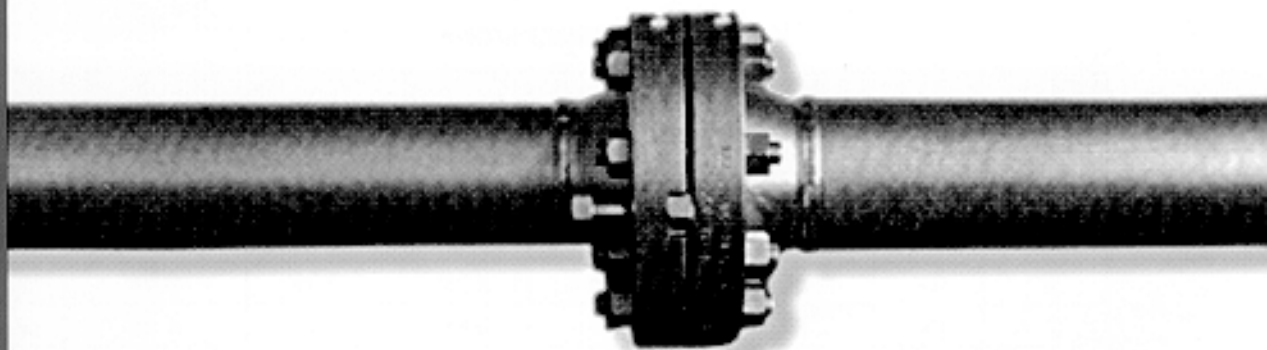
8**	8	3/4"	7/8"	4 1/4"	11 3/4"	5/8" x 3"	73
10**	12	7/8"	1"	4 3/4"	14 1/4"	5/8" x 3"	104
12**	12	7/8"	1"	4 3/4"	17"	5/8" x 3"	160

\*Schedule 30 pipe, all others are Schedule 40.  
 Catalog No. CT 15 RT (threaded) available in 1" and 2" sizes.

All specifications subject to change without notice as part of a continuing program of product improvement.

**DANIEL**

# CORNER TAP ORIFICE FLANGES



**DANIEL**

# CORNER TAP ORIFICE FLANGES

